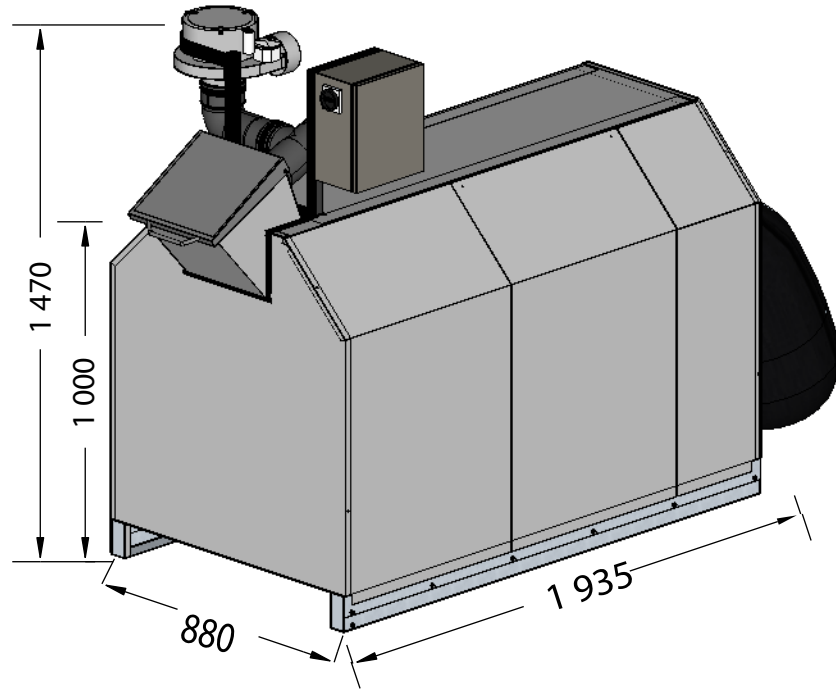
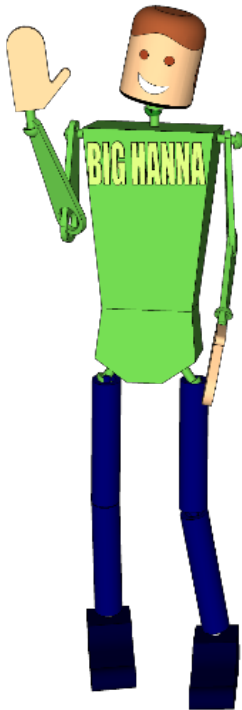




BIGHANNA[™] composter

MODEL T40



Capacity *)

| | |
|------------------------|--------|
| Food waste/day (kg) | 10-15 |
| Food waste/week (kg) | 75-100 |
| Food waste/annum (ton) | 4-5 |
| Number of households | 25-35 |

GHG Emissions (MTCO₂EQ) avoided
calculated on www.epa.org using WARM

| | |
|---------------------------------|----|
| GHG Emissions landfilled | 8 |
| GHG Emissions composted on-site | -1 |
| GHG Emissions savings | -9 |

Capacity when using mechanical dewaterer *)

| | |
|------------------------|---------|
| Food waste/day (kg) | 15-25 |
| Food waste/week (kg) | 120-160 |
| Food waste/annum (ton) | 6-8 |

Measurements

| | |
|--|-----------|
| Volume cylinder (m ³) | 0,61 |
| Weight empty (kg) | 200 |
| Weight empty incl shredder/inlet (kg) | - |
| Max weight full (kg) | 540 |
| Number of feet on machine | 4 |
| Connection to ventilation (mm) | Ø110 |
| Connection for drainage - infeed hopper (mm) | - |
| Height inlet (mm) | ca 1 000 |
| Infeed opening (mm) | 285 x 295 |
| Volume hopper fed inlet (l) | - |
| Height under outlet (mm) | 600 |

Equipment

| | |
|---|---|
| Temperature sensors | - |
| Inspection door(s) on hood | - |
| Access door(s) into cylinder | 1 |
| Touch screen panel | - |
| Optional equipment for composter | |
| Mobile or wireless router | - |
| Log in via computer, phone or tablet and email alarms | - |
| SMS alarms | - |
| Energy meter | - |
| Scales | - |
| Rfid reader | - |
| Moisture sensor in mass (VWC) | - |
| Humidity (rH) and Temperature sensor in air | - |
| CO ₂ sensor in air | - |
| Hopper fed 40L inlet (auger feeder) | - |
| Customized hopper | - |
| Shredder | - |
| Bin tipper / bin lift | - |
| Sliding hatch | - |
| Dewatering unit (screw press) | - |
| Mechanical macerator & dewaterer (stand-alone) | ✓ |
| Automatic pellets feeder | - |
| Biofilter | ✓ |
| Maturation box | - |

© Susteco AB reserves the right to modify, at any time and without notice, any or all of its products' features, designs, components and specifications.



BIGHANNA[®] composter



Electrical supply

Power supply 240 V, 1-phase, 50 Hz, 10A

Energy consumption **)

Total kWh/day standard model 1,01

*) The capacity varies depending on content / mix of food waste, moisture content, absorbent material, biological process and how the machine is fed and programmed. The macerator / dewatering equipment reduces the volume and weight of the food waste and increases the capacity, i.e. more food waste can be recycled. See separate information.

**) The electrical power consumption is calculated for indoor installations. The heater is only used in cold temperatures and only when the temperature between the hood and the cylinder is lower than 5-10° C. This is not included in the electrical power consumption.

