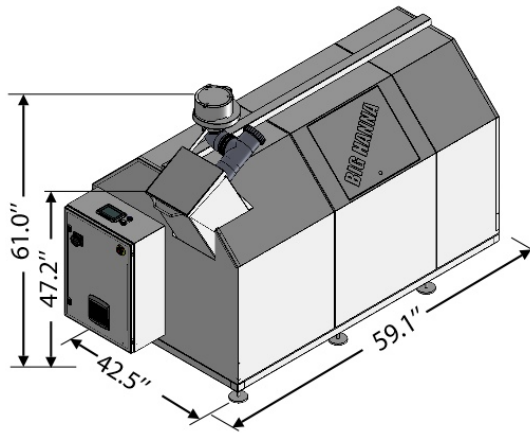
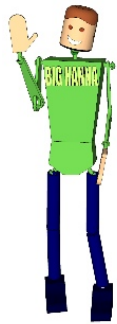


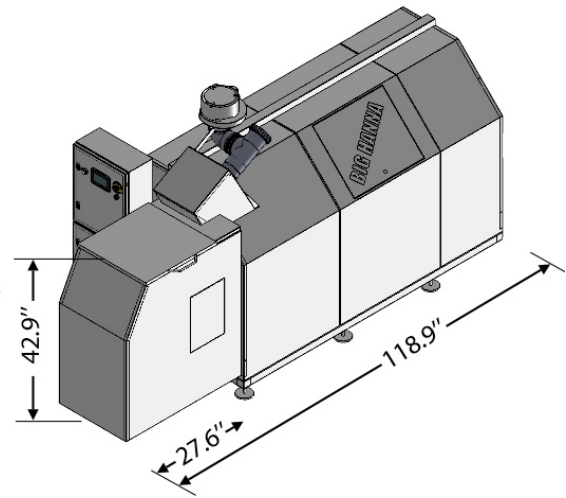


BIGHANNA[™] composter

MODEL T60



T60 STANDARD



**T60_10G (10G_GALLON INLET)
T60_10GS (10-GALLON INLET AND SHREDDER)**

Capacity*)

Food waste/day (lbs.)	44-79
Food waste/week (lbs.)	330-550
Food waste/annum (lbs.)	17,000-28,500
Number of households	55-70

GHG Emissions (MTCO₂EQ) avoided
calculated on www.epa.org using WARM (per year)

GHG Emissions landfilled	20
GHG Emissions composted on-site	-3
GHG Emissions savings	-23

Capacity when using mechanical dewaterer *)

Food waste/day (lbs.)	76-126
Food waste/week (lbs.)	520-880
Food waste/annum (lbs.)	27,000-46,000

Measurements

Volume cylinder (ft ³)	37.8
Weight empty (lbs.)	970
Weight empty incl. shredder/10-gallon inlet (lbs.)	1,080
Max weight full incl. shredder/10-gallon inlet (lbs.)	2,400
Number of feet on machine	6
Connection to ventilation - adapt to US piping connection	Ø4"
Connection for drainage - infeed hopper (inches)	Ø3"/Ø4"
Height inlet (inches)	approx. 3' 11.3"
Infeed opening (inches)	11.2"x11.6"
Infeed opening - 10-gallon inlet (inches)	19.6"x18.5"
Volume hopper fed inlet (gallons)	10
Height under outlet (inches)	23.2"
Height - option shredder (inches)	5' 6.8"

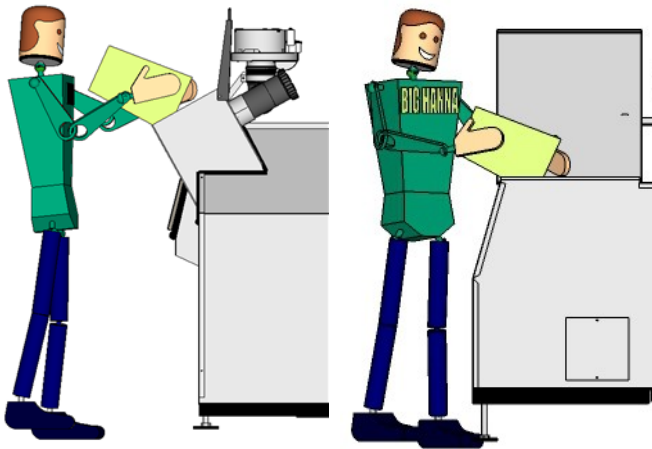
Equipment

Temperature sensors	3
Inspection door(s) on hood	1
Access door(s) in to cylinder	1
Touch screen panel	✓
Optional equipment for composter	
Mobile or wireless router	✓
Log in via computer, phone or tablet & email alarms	✓
SMS alarms	✓
Energy meter	✓
Scales	-
Rfid reader	✓
Moisture sensor in mass (VWC)	✓
Humidity (rH) and Temperature sensor in air	✓
CO ₂ sensor in air	✓
Hopper fed 10 gallon inlet (auger feeder)	✓
Customized hopper	-
Shredder	✓
Bin Tipper / Bin Lift	✓
Sliding hatch	-
Dewatering unit (screw press)	-
Mechanical macerator & dewaterer (stand-alone)	✓
Automatic pellets feeder	-
Biofilter	✓
Maturation box	✓

© Susteco AB reserves the right to modify, at any time and without notice, any or all of its products' features, designs, components and specifications.



BIGHANNA[™] composter

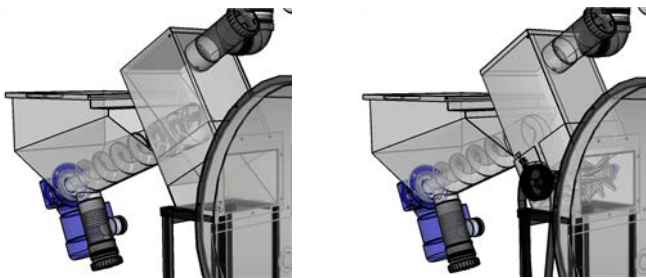


STANDARD INLET

10-GALLON INLET

For larger volumes of food waste, a 10 gallon inlet may facilitate handling of the food waste and feeding of the Big Hanna Composter. The inlet volume is about 40 liter (approx. 10 gallons). The standard inlet is appr. 47.2" high and the 10 gallon inlet is appr. 42.9". Maximum size of non-soft food waste is Ø 12 cm or 4"-5". The 10-gallon inlet increases the length of a standard machine (with or without shredder unit) with 600 mm (approx. 23.6")

Restaurants often prefer this option. A shredder can be fitted together with the 10-gallon inlet.



**10 GALLON INLET
WITHOUT SHREDDER**

**10 GALLON INLET
WITH SHREDDER**

A shredder can be installed in between the infeed auger and the cylinder on models T60 and T120 only. The shredder cuts the material and increases the capacity of the Big Hanna Composter. The shredder is made of durable high grade steel.

Electrical supply**)

Power supply

208/240V

Energy consumption *)**

Total kWh/day standard model

1.11

Total kWh/day, incl 10G inlet & shredder

1.50

*) The capacity varies depending on content / mix of food waste, moisture content, absorbent material, biological process and how the machine is fed and programmed. The macerator / dewatering equipment reduces the volume and weight of the food waste and increases the capacity, i.e. more food waste can be recycled. See separate information.

** Standard models. Other electrical supply can be specified at order (for example 1-phase).

*** The electrical power consumption is calculated for indoor installations. The heater is only used in cold temperatures and only when the temperature between the hood and the cylinder is lower than 41-50° F. This is not included in the electrical power consumption.

