



ON SITE COMPOSTING WITH BIG HANNA

The philosophy behind Big Hanna Composter is very simple - give people a reliable, efficient system to deal with the food waste problem on a localised basis.

By composting with Big Hanna we are closing the cycle on-site, where we live or work, and are actively contributing to sustainable development. The biological process in Big Hanna is natural and has no impact on the environment. By composting on-site we are creating a resource from our food waste - you will get about 10% back in compost. This is an investment in the environment that will pay off.

For 20 years Big Hanna's have been installed all over the world. Most of the machines are in Europe in housing estates, tenants associations, prisons, schools, hotels, conference centres and mountain lodges. You can also find Big Hanna around the Arctic and Antarctic circles, military camps, The Eden Project, Government institutions and in many schools in Sweden, England, Norway, France and Canada.

Our customers all have very high requirements on the economical and practical handling of their food waste. We have a vast experience from our many installations and can make sure that the chain from food waste to compost works as simply as possible. A binlift and a hopper fed inlet are some of the options which make it possible to adjust Big Hanna to your needs.

Contact us for a visit, to take you to see a machine or for more information.



The environmental reasons are obvious, less transportation and small scale handling on-site leave a smaller carbon footprint.



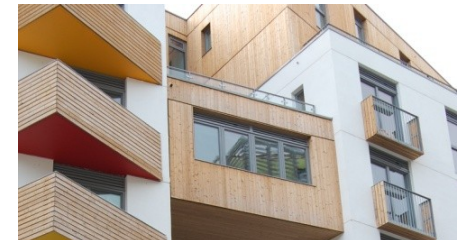
The bin lift makes it easier to handle large volumes of food waste. Talbot Hotel in Wexford, Ireland has a binlift for their model T240.



The food waste is fed in to the machine's front end. It is convenient to be able to treat the food waste daily. Picture from Gamleby Folk Highschool, Sweden.



The Eden Project in Cornwall, UK has a larger version of a Big Hanna called Neter. They have been composting on-site since 2005.



'Sustainable living' from choice of construction material to composting feature in Bioregional Quintain's 'One Brighton', UK.

FIVE DIFFERENT MODELS

Swedish designed and manufactured Big Hanna is available in five different models. Temperature sensors are standard on models T60-T240. 40L inlet fed hopper with or without a shredder is optional on models T60-T120. Bin lift for 80 litre standard bins is optional on model T240. For the ventilation of odours from the composter there is an efficient biofilter available as an alternative to direct connection to sewage.

Model T40

Food waste: 75-100 kg/week
Number of households: 25-35
LxWxH: 1995x885x1515 mm

Model T60

Food waste: 150-250 kg/week
Number of households: 55-70
LxWxH: 2400x1080x1550 mm

Model T75

Food waste: 225-325 kg/week
Number of households: 70-90
LxWxH: 2900x1080x1550 mm

Model T120

Food waste: 300-500 kg/week
Number of households: 90-135
LxWxH: 3900x1080x1550 mm

Model T240

Food waste: 400-1200 kg/week
Number of households: 130-300
LxWxH: 5300x1400x1800 mm



SUSTECO AB

SUSTAINABILITY, TECHNOLOGY, ECOLOGY & ECONOMY

Head office: Sockerbruket 25, 414 51 Göteborg, Sweden. Phone: +46 (0)31 694103. E-mail: info@susteco.se
UK sales: PO Box 121, Woodbridge, IP13 7SU, UK. Phone: +44 (0)20 8638 0500. E-mail: uk-sales@susteco.se